

Mycronic MYPro™ Line **Accessories and software**

2023 Accessory catalog



Smart
accessories
for the SMT
assembly
shop floor



Pick-and-place Feeders and accessories

Mycronic's Agilis™ feeder systems provide the most intelligent and agile component delivery solution on the market. Whether it's tape, stick or matrix tray feeders, or components of any shape and size, Mycronic's feeders are designed to deliver the utmost in reliability, performance and easy operation.

AGILIS 8 MM TAPE MAGAZINES AND FEEDERS

The ALM8 magazine and the Agilis 8mm feeder is the backbone of the Agilis feeder system. The 8mm tape feeder is using a unique cover tape separation method without take-up reels, making it fast and easy to load and unload. The ALM8 magazine can hold up to 16 different 8mm tapes.

| PART NUMBER | DESCRIPTION (typical package) |
|-------------|---|
| L-014-1561B | Agilis LM8 magazine with wide bin |
| L-014-1395 | Agilis feeder 8 mm 3.7 green (01005, 0201) |
| L-014-1320 | Agilis feeder 8 mm 4.0 white (0402, 0603) |
| L-014-1319 | Agilis feeder 8 mm 4.7 yellow (0805, 1206, MELF-2012) |
| L-014-1321 | Agilis feeder 8 mm 5.4 red (SOT-23, SOT-143, MELF-3514) |
| L-014-2119 | Agilis feeder 8 mm ADJ 3.7-5.5 kit black |

AGILIS 12/16 MM TAPE MAGAZINES AND FEEDERS

The Agilis 12/16 mm feeders are using the same unique cover tape separation method without take-up reels as the 8 mm feeders. The ALM1216 magazine can hold up to 8 different 12 or 16 mm tapes.

| PART NUMBER | DESCRIPTION |
|-------------|----------------------------------|
| L-014-1562B | Agilis LM12/16 magazine with bin |
| L-014-1490 | Agilis feeder 12, 8.5 |
| L-014-1552 | Agilis feeder 12, 7.5-9.5 |
| L-014-1492 | Agilis feeder 16, 12.5 |
| L-014-1553 | Agilis feeder 16, 11.0-13.0 |



AGILIS FLEX TAPE MAGAZINES AND FEEDERS

The Agilis Flex magazine offers you the possibility to handle any tape component, from 8 to 152 mm in width, with pocket depths that accommodate even the tallest components. Whatever tape components arrive on your production floor, Agilis Flex is built to handle them. The new Generation 2 design incorporates several design updates that improve reliability, durability and user friendliness (see separate description).

| PART NUMBER | DESCRIPTION |
|-------------|-------------------------------------|
| L-014-1933B | Agilis LM flex magazine with bin |
| 4052911 | Agilis feeder 8 flex Generation 2 |
| 4052912 | Agilis feeder 12 flex Generation 2 |
| 4052913 | Agilis feeder 16 flex Generation 2 |
| 4052914 | Agilis feeder 24 flex Generation 2 |
| 4052915 | Agilis feeder 32 flex Generation 2 |
| 4052916 | Agilis feeder 44 flex Generation 2 |
| 4052917 | Agilis feeder 56 flex Generation 2 |
| 4052918 | Agilis feeder 72 flex Generation 2 |
| 4052919 | Agilis feeder 88 flex Generation 2 |
| 4052920 | Agilis feeder 104 flex Generation 2 |
| 4052921 | Agilis feeder 120 flex Generation 2 |
| 4052922 | Agilis feeder 136 flex Generation 2 |
| 4052923 | Agilis feeder 152 flex Generation 2 |

IMPROVE AGILIS FLEX RELIABILITY WITH REEL HOLDERS

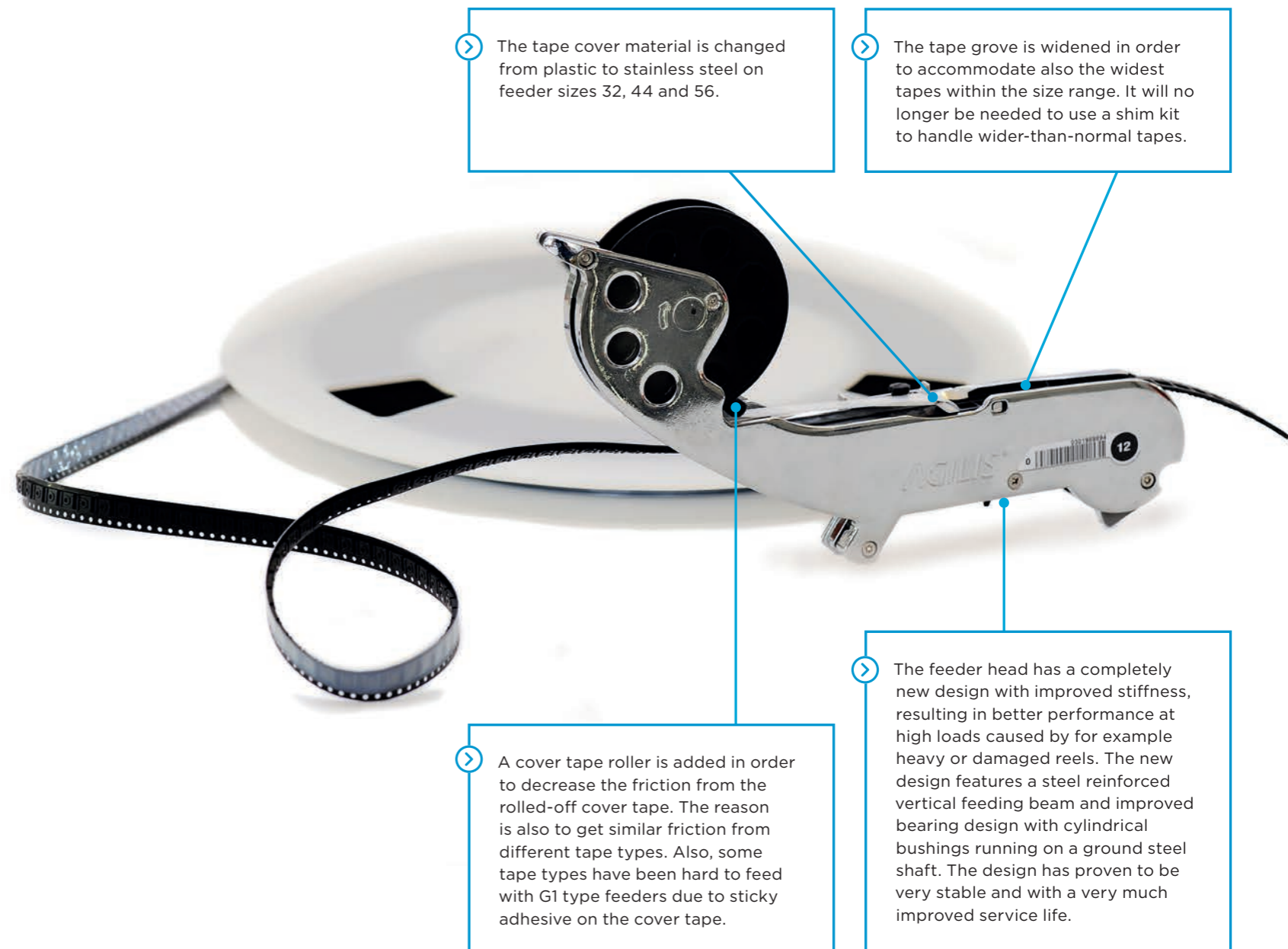
The Reel holder is an accessory that improves the reliability and reduces the risk of stepping errors when using Agilis Flex feeders. The Reel holder will elevate the reel from the bin floor, and thereby reduce the friction when rotating.



| PART NUMBER | DESCRIPTION |
|-------------|-------------------|
| 4013516 | Reel holder 8 mm |
| 4011720 | Reel holder 12 mm |
| 4011721 | Reel holder 16 mm |
| 4011722 | Reel holder 24 mm |
| 4011723 | Reel holder 32 mm |
| 4011724 | Reel holder 44 mm |

AGILIS FLEX GENERATION 2

Generation 2 of the Agilis Flex feeders have been mechanically modified in several ways in order to improve reliability, durability and user friendliness. The changes are described below. Generation 2 flex feeders are fully compatible and interchangeable with all previous feeder revisions and require no hardware or software upgrade.





AGILIS 4 MM FEEDER AND MAGAZINE

The ALM4 magazine and the Agilis 4mm feeder is the ideal solution for 4mm tape, which is primarily used for small chip components such as the 01005. The 4mm tape feeder is using the same unique cover tape separation method as the well-known 8, 12, and 16mm Agilis feeders, making it fast and easy to load and unload. The ALM4 magazine can hold up to 16 different 4mm tapes, and is of course hot-swappable. It's not possible to put any other feeder type in the ALM4.

Technical requirements

- The ALM4 is compatible with MY100/200/300 machines and requires TPSys 5.1 or later.
- The ALM4 requires MCU with CMOT3. Replace MCU if older version. The CMOT3 was released in 2014.

| PART NUMBER | DESCRIPTION |
|-------------|------------------------------|
| 4049257 | Agilis feeder 4, 2.0 |
| L-014-2170 | Agilis LM4 magazine with bin |



AGILIS STICK MAGAZINE

The Agilis Stick Magazine, ASM, utilizes a high-precision, short-stroke linear drive with a servo-controlled, horizontal motion to effectively reduce operator assistance and component waste. Because the ASM handles a very wide range of SMT components you will always be prepared for any job. Removable stick pallets with a built-in pallet ID and barcode system allow you to replenish and pre-load components before they are loaded into the magazine.

| PART NUMBER | DESCRIPTION |
|-------------|------------------------------------|
| L-014-1642 | Agilis stick magazine |
| L-014-1687 | Agilis stick pallet 10mm height |
| L-014-1688 | Agilis stick pallet 10/28mm height |



STICK POSITIONERS

The ASM stick positioners are used for positioning components and sticks in Agilis stick pallets.

| PART NUMBER | DESCRIPTION |
|-------------|-----------------------------|
| L-014-1768 | Positioner DPAK TO-252 |
| L-014-1792 | Positioner DPAK TO-263 |
| L-014-1756 | Positioner MSOP8/10 |
| L-014-1843 | Positioner PLCC18 |
| L-014-1766 | Positioner PLCC20 |
| L-014-1796 | Positioner PLCC20 socket |
| L-014-1762 | Positioner PLCC28/32 |
| L-014-1797 | Positioner PLCC28/32 socket |
| L-014-1763 | Positioner PLCC44 |
| L-014-1798 | Positioner PLCC44 socket |
| L-014-1794 | Positioner PLCC52 |
| L-014-1799 | Positioner PLCC52 socket |
| L-014-1795 | Positioner PLCC68 |
| L-014-1800 | Positioner PLCC68 socket |
| L-014-1767 | Positioner PLCC84 |
| L-014-1801 | Positioner PLCC84 socket |
| L-014-1754 | Positioner SO14/16 |
| L-014-1788 | Positioner SO14/16W 8.7 |
| L-014-1769 | Positioner SO16W 11.3 |
| L-014-1802 | Positioner SO18/20 |
| L-014-1764 | Positioner SO24 |
| L-014-1784 | Positioner SO24 WS20.5 |
| L-014-1765 | Positioner SO28 |
| L-014-1785 | Positioner SO28 WS20.5 |
| L-014-1787 | Positioner SO32 |
| L-014-1753 | Positioner SO8 |
| L-014-1790 | Positioner SO8 high |
| L-014-1789 | Positioner SO8W 8.7 |
| L-014-1837 | Positioner SOJ20 |
| L-014-1839 | Positioner SOJ20/24/26 |
| L-014-1838 | Positioner SOJ24 |
| L-014-1840 | Positioner SOJ28 |
| L-014-1841 | Positioner SOJ32 |
| L-014-1842 | Positioner SOJ40 |
| L-014-1791 | Positioner SOT223 |
| L-014-1758 | Positioner TSSOP14/16 |
| L-014-1759 | Positioner TSSOP20/24/30 |
| L-014-1836 | Positioner TSSOP28/38/44 |
| L-014-1757 | Positioner TSSOP8/10 |
| L-014-1750 | Stick positioner blank |
| L-014-1751 | Stick stop 10 adjustable |
| L-014-1752 | Stick stop 28 adjustable |

AGILIS TRAY MAGAZINE

The Agilis Tray Magazine ATM8 offers the possibility to handle up to eight JEDEC trays in a single magazine slot. Pallets are available in a range of different depths, accommodating different tray heights. If the tray height doesn't match any of the pallet heights, it can be handled by adding spacers below the tray.

Technical requirements

- TPSys 3.3 or later
- MTCB with CMOT5

| PART NUMBER | DESCRIPTION |
|-------------|---------------------------|
| 4002733 | Agilis Tray Magazine ATM8 |
| 4002751 | ATM pallet 1/4", 2 pcs |
| 4002757 | ATM pallet 1/2" |
| 4002758 | ATM pallet 3/4" |
| 4002759 | ATM pallet 1" |
| 4002760 | ATM pallet 1.7" |
| 4002761 | ATM pallet spacer 2 mm |
| 4002762 | ATM pallet spacer 5 mm |
| 4002764 | ATM pallet spacer 10 mm |



REDUCE CHANGEOVER TIMES WITH AGILIS BINS

The Agilis Bin offers a convenient and cost-efficient way of preparing and storing component reels, with or without feeders, ready for your next changeover. The preloaded bin can be easily dropped into any free magazine, and the feeders are then snapped into place with very little effort.

| PART NUMBER | DESCRIPTION |
|-------------|---|
| L-014-2146 | Agilis Bin LM8 7" wide |
| L-014-1569C | Agilis Flex Bin 13" for LM1216 and Flex |
| L-014-2114 | Agilis Flex Bin wall 13", 4 pcs |





AGILIS LARGE REEL ATTACHMENT

The Agilis Large Reel Attachment (LRA) is used to handle reels that are too large to be placed inside the bin. The LRA can hold up to four reels at the same time, with individual braking force for each side. Compatible with ALM8, ALM1216 and ALM Flex magazines.



| PART NUMBER | DESCRIPTION |
|-------------|------------------------------|
| 4014720 | Agilis large reel attachment |

AGILIS FEEDER RACK

A feeder rack for convenient storage of Agilis feeders. The rack can hold 8, 12 and 16 mm Agilis feeders in any combination. Up to 16 feeders (8mm) can be stored in the rack.



| PART NUMBER | DESCRIPTION |
|-------------|--------------------|
| L-014-1623 | Agilis feeder rack |



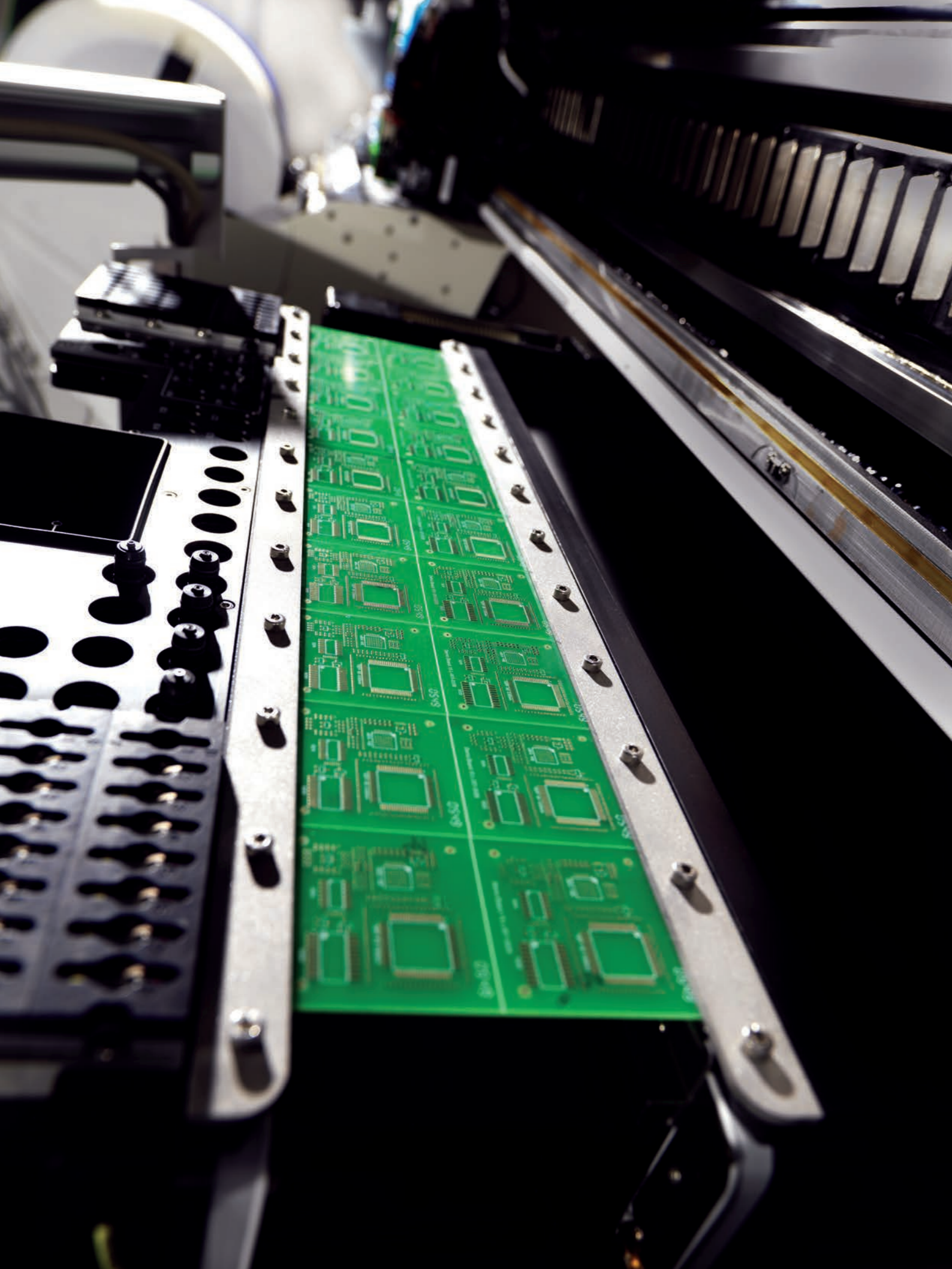
PAPERLESS GUIDANCE WITH AGILIS SMART BINS AND E-LABELS

The Agilis Smart Bin system provides paperless kitting guidance and changeover instructions, right in front of you. The e-labels show real-time information about material status and kitting progress, where you need it, when you need it. The system improves kitting efficiency by enabling operators to preload components in Agilis Bins for upcoming jobs, without losing track of material location.

Technical requirements

- TPSys 5.2 or later.
- Stand-alone data server.
- MYCenter Material Handling SW.

| PART NUMBER | DESCRIPTION |
|-------------|----------------------|
| L-010-0900 | E-label start kit EU |
| L-010-0912 | E-label start kit US |



Pick-and-place Board handling

Are you looking to increase automation, improve quality or reduce production costs for your circuit board manufacturing? With Mycronic's board handling solutions you can achieve all of those goals. From board supports and fixtures to complete lines, we provide the electronics industry with state-of-the-art solutions that are ready for whatever the future will bring.

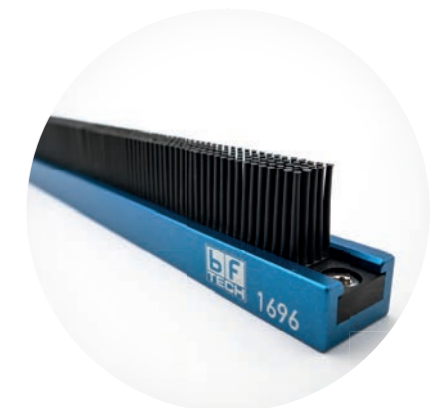
ELIMINATE MANUAL POSITIONING OF SUPPORT PINS

The "SoftCone" universal board support is a semi-rigid support device that eliminates manual positioning of support pins. The vertical rubber fingers will provide enough support to prevent the board from bending during placement, but at the same time conform to the shape of already mounted components on the bottom side of the board. The support, which is kept in place by magnets, is easily positioned on the lift-plate, between the fixed and moving rail on the internal conveyor, and does not require any further adjustments.

Technical requirements

- MY300 with T460/T640, or MY100/200 with T3/T4.

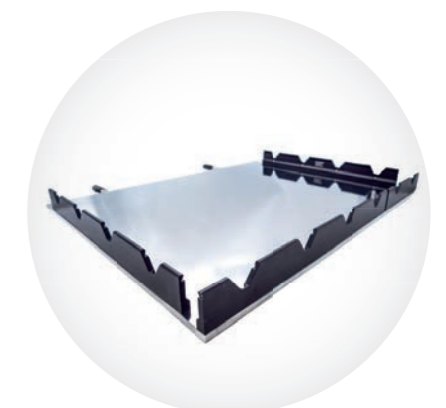
| PART NUMBER | DESCRIPTION |
|-------------|--------------------------------------|
| 4054114 | Board support SoftCone 327mm T460/T3 |
| 4054116 | Board support SoftCone 530mm T640/T4 |

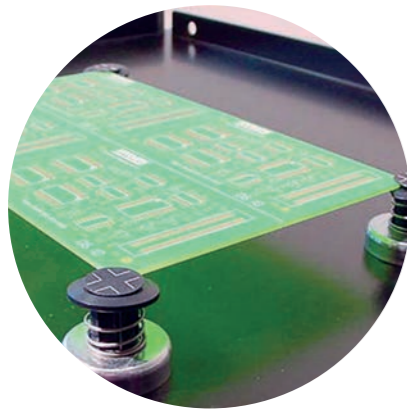


MANUAL LOAD ADAPTERS

The Manual Load Adapter turns the internal conveyor into a manual load table for odd boards or small batches. Includes board edge support and support pins.

| PART NUMBER | DESCRIPTION |
|-------------|---------------------------------|
| L-045-0540 | Manual load adapter for T3/T460 |
| L-045-0539 | Manual load adapter for T4/T640 |
| L-045-0485 | Manual load adapter for T5 |
| L-045-0486 | Manual load adapter for T6 |





ODD-BOARD FIXTURE

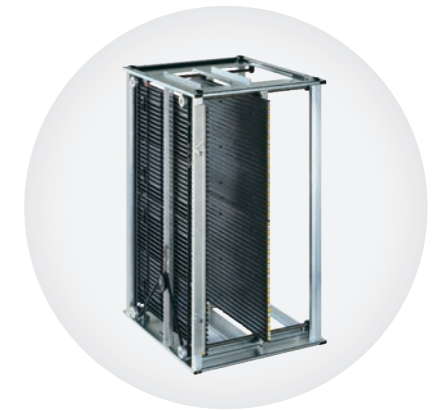
The odd-board fixture is suitable for handling odd-shaped or non-standard boards that can't be transported on conveyor belts.

| PART NUMBER | DESCRIPTION |
|-------------|------------------------------|
| L-037-0053 | Inline odd-board fixture kit |
| L-037-0052 | Board support |
| L-037-0055 | Support pin adjustable |

PCB MAGAZINES FOR LOADERS, UNLOADERS AND BUFFERS

The series 700 magazines provide safe and easy PCB handling. All board contact surfaces are made from conductive ESD-safe polyesterol plastic. Width is changed by pulling the gear belt mounted on the fixed PCB guide wall until correct width is achieved. The magazines are available in different sizes depending on maximum panel width required.

| PART NUMBER | DESCRIPTION |
|-------------|--------------------------------|
| K-017-0486 | PCB magazine 310 mm series 700 |
| K-017-0294 | PCB magazine 390mm series 700 |
| K-017-0295 | PCB magazine 460mm series 700 |
| K-017-0296 | PCB magazine 510 mm series 700 |



Pick-and-place Pick-up tools

Large BGAs, LEDs, switches, sockets or coils. From the smallest chip components up to large connectors. Or stacked, dipped and entirely new package varieties. Whatever the next job demands, our standard or custom-made nozzles make quick work of them all.



Hydra head Generic tools

| PART NUMBER | NAME | COLOR CODE | DESCRIPTION | ID (mm) | OD (mm) |
|-------------|------|--------------|--------------------------|---------|---------|
| L-012-1346 | H08 | Purple | For 01005. Ceramic. | 0.13 | 0.4 |
| L-012-0816 | H06 | Green | For 0201. | 0.25 | 0.6 |
| L-012-1361 | H09 | Yellow-white | For 0201. Ceramic. | 0.25 | 0.6 |
| L-012-0533B | H01 | White | For 0402. | 0.5 | 1.2 |
| 4058968 | H07 | Orange | For 0402. Ceramic. | 0.4 | 1.0 |
| L-012-0534B | H02 | Yellow | For 0603-1210. | 0.7 | 1.5 |
| 4058969 | H10 | Red-white | For 0603-0805. Ceramic. | 0.7 | 1.2 |
| L-012-0592 | H04 | Blue | For SOD80/MiniMELF. | 0.9 | 1.5 |
| L-012-0576 | H04 | Blue | Spare tool tips for H04. | 0.9 | 1.5 |
| L-012-0535B | H03 | Red | SO8/14/16 | 1.0 | 3.0 |
| L-012-0824 | H05 | Brown | SO16/20/24 | 2.8 | 5.2 |



Midas head Generic tools

| PART NUMBER | NAME | DESCRIPTION |
|-------------|----------------|--|
| L-012-0011E | Tool A12 | Spring-suspended tool with 0.8mm (0.03") internal diameter tip. |
| L-012-0012F | Tool A13 | Spring-suspended tool with 1.2mm (0.047") internal diameter tip. Color black. Typical component types: 1206, 1812, SOT-89. Spare part tool tip: D-012-1162. |
| L-012-0109C | Tool A14S | Spring-suspended tool with 2.0mm (0.08") internal diameter tip. |
| L-012-0014D | Tool A23 | Stiff tool with 3.0mm (0.12") internal diameter tip. Insulated. Color black. Not exchangeable tool tip. Typical component types: SO-18, SO-20, Flat Pack-80. |
| L-012-0551B | Tool A23S | Spring-suspended tool with 3.0mm (0.12") internal diameter tip, including spare tip and puller for tip replacement. |
| L-012-0015D | Tool A24 | Stiff tool with 5.0mm (0.2") internal diameter tip. Insulated. Color black. Not exchangeable tool tip. Typical component types: LCCC, PLCC, QFP. |
| L-012-0552B | Tool A24S | Spring-suspended tool with 5.0mm (0.2") internal diameter tip, including spare tip and puller for tip replacement. |
| L-012-0016E | Tool A34 | Spring-suspended MELF tool for 1.5mm (0.06") diameter. Insulated. Color black. Typical component type: MINIMELF. Spare part tool tip: D-012-0308C. |
| L-012-0884 | Tool B12 | Spring-suspended tool with tip measuring 0.13 mm (0.005") internal diameter, 0.45 mm (0.018") outer diameter. Typical component 01005 and 0201. |
| L-012-0389 | Tool B13 short | Stiff, extra short tool with 8 mm (0.3") internal diameter tip and 10 mm (0.4") outer diameter. |
| L-012-0020E | Tool B23 | Spring-suspended MELF tool for 2.5 mm (0.1") diameter. Insulated. Color black. Typical component type: SOD80. Spare part tool tip: D-012-0248D. |
| L-012-0021E | Tool B24 | Spring-suspended MELF tool for 2.3 mm (0.09") diameter. Insulated. Color black. Typical component type: MELF. Spare part tool tip: D-012-0255D. |
| L-012-0022E | Tool B34 | Spring-suspended MELF tool for 2.0 mm (0.08") diameter. Insulated. Color black. Typical component type: MELF. Spare part tool tip: D-012-0404C. |
| L-012-0802 | Tool C14 | Spring-suspended tool with tip measuring 0.25mm (0.01") internal diameter. |
| L-012-0026D | Tool C23 | Stiff tool with 8 mm (0.3") internal diameter tip. Insulated. Color black. Not exchangeable tool tip. For large components mounted using optical centering. |
| L-012-0383C | Tool C23S | Spring-suspended tool with 8 mm (0.3") internal diameter tip. Insulated. For large components mounted with optical centering. Spare part tool tips: L-012-0381B. |



Hydra head Special tools

| PART NUMBER | NAME | DESCRIPTION |
|-------------|-----------------------------|---|
| L-012-0971 | Tool Hydra LED Cree XP/XT | Hydra LED tool designed in non-stick material for Cree XP-E, XP-G, XT-E or compatible parts. With evacuation holes. Suitable for Hydra without blow function. Outer diameter: 4.00mm. Inner diameter: 3.45mm. Set of 9. |
| L-012-0972 | Tool Hydra LED Luxeon Rebel | Hydra LED tool designed in non-stick material for Luxeon Rebel ES/Rebel Plus, Cree XH-B/XH-G, Osram Oslon Square GW CSSRM1/LCW/LD/LUW or compatible parts. Outer diameter: 3.3mm. Inner diameter: 2.8mm. Set of 9. |
| L-012-0997 | Tool Hydra LED Luxeon Z | Hydra LED tool designed in non-stick material for Luxeon Z or compatible parts. Outer diameter: 1.2mm. Inner diameter: 0.5mm. Set of 9. |
| L-012-1006 | Tool Hydra LED Luxeon C | Hydra LED tool designed in non-stick material for Luxeon C or compatible parts. Outer diameter: 2.0mm. Inner diameter: 1.75mm. Set of 9. |
| L-012-1010 | Tool Hydra LED Cree XP/XT | Hydra LED tool designed in non-stick material for Cree XP-E, XP-G, XT-E or compatible parts. Suitable for Hydra with blow function. Outer diameter: 4.0mm. Inner diameter: 3.45mm. Set of 9. |
| L-012-0948 | Tool Hydra LED Cree XB | Hydra LED tool designed in non-stick material for Cree LEDs type XB or compatible parts. OD = 2.2mm, ID = 1.8mm. Set of 9. |
| L-012-0950 | Tool Hydra LED Avago ALMD | Hydra LED tool for Broadcom (Avago) LEDs type ALMD or compatible parts. OD = 4.4 mm/ID = 3.9mm. Set of 9. |
| L-012-1011 | Tool Hydra LED Osram | Hydra LED tool designed in non-stick material for Osram Oslon Sq GW CSSRM2 or compatible parts. OD = 3.3mm/ID = 3.0mm. Set of 9. |

Always consult Mycronic support before ordering special tools. Other special tools available on request.



Midas head Special tools

| PART NUMBER | NAME | DESCRIPTION |
|-------------|------------------------------------|--|
| L-012-0845 | Tool C24 flat nozzle 2.9mm x 1.0mm | Nozzle outer dimensions 2.9mm x 1.0mm. Typical components: Connectors. |
| L-012-0846 | Tool C24 flat nozzle 4.5mm x 1.0mm | Nozzle outer dimensions 4.5mm x 1.0mm. Typical components: Connectors. |
| L-012-0847 | Tool C24 flat nozzle 7.0mm x 1.0mm | Nozzle outer dimensions 7.0mm x 1.0mm. Typical components: Connectors. |
| L-009-0357 | Tool C24 flat nozzle 1.5mm x 1.0mm | Nozzle outer dimensions 1.5mm x 1.0mm. Typical components: Connectors. |
| L-012-0848 | Tool C24 MELF 3.3 | Tool tip curve radius 1.65mm. Typical components: MELF, diodes. |
| L-012-0849 | Tool C24 MELF 4.5 | Tool tip curve radius 2.25mm. Typical components: MELF, diodes. |
| L-012-0850 | Tool C24 MELF 7.7 | Tool tip curve radius 3.5mm. Typical components: MELF, diodes. |
| L-009-0019 | Tool double nozzle cc 3.8 45D | Nozzle dimensions d = 2 x 1.5mm, cc 3.8mm, height 8mm. Typical components: Connector, coils or components with a center hole. |
| L-009-0350 | Tool double nozzle cc 4.1mm OD 1.5 | Nozzle dimensions: d = 2 x 1.5mm, cc 4.1mm, height 8mm. Typical components: Connectors with leads on the side, coils or components with a center hole. |
| L-009-0457 | Tool double nozzle cc 4.3mm | Nozzle dimensions: d = 2 x 1.2mm, cc 4.3mm, height 8mm. Typical components: Connectors with leads on the side, coils or components with a center hole. |
| L-009-0151B | Tool double nozzle cc 6mm | Nozzle dimensions: d = 2 x 3mm, cc 6mm, height 8mm. Typical components: Connectors with leads on the side, coils or components with a center hole. |
| L-009-0003 | Tool double nozzle cc 8mm | Nozzle dimensions: d = 2 x 2mm, cc 8mm, height 8mm. Typical components: Connectors with leads on the side, coils or components with a center hole. |
| L-009-0111 | Tool gripper 2-5mm | Grip 2-5mm jaws, width 5mm, height 4mm. Typical components: Connectors, odd shape components. |
| L-009-0089 | Tool gripper 2-6mm | Grip 2-6mm jaws, width 5mm, height 5mm. Typical components: Connectors, odd shape components. |
| L-009-0051 | Tool gripper for dip switch | Grip 5-8mm jaws, width 4mm, height 1.5mm. Typical components: Dip switch, connectors. |
| L-009-0163 | Tool gripper wedge shaped jaws | Grip 3.6-6.4mm jaws, width 5mm, height 3.2mm. Typical components: Connectors, odd shape components. |
| L-009-0071 | Tool low force | Placement force 0.25N. Tool tip not included. Typical components: Fragile components or for mounting on fragile substrates. |
| L-012-1332 | Tool Midas for Hydra nozzles | Spring loaded mount tool for the high-precision mounthead (Midas) to be used with Hydra nozzles, for example Hydra LED nozzles. Tool coded C24. |
| L-009-0308 | Tool bellow suction cup | Special tool for uneven surface of heavy components. Outer diameter: 10.0mm. Inner diameter: 9.2mm. |
| L-009-0255 | Tool QFP 22mm | Diameter 22mm. Special large tool bank required. Typical components: Large and heavy QFP/BGA. |
| L-009-0063 | Tool thin nozzle | Tool for mounting of small components in narrow areas or close to tall components. Tip length 5.0mm, diameter 0.5mm. |

Always consult Mycronic support before ordering special tools. Other special tools available on request.

Pick-and-place Software

Mycronic offers the richest software suite in the industry, with integrated applications covering the entire range of SMT assembly. All software is designed to provide a single set of reliable, searchable data, allowing you to improve utilization, efficiency and responsiveness more easily than ever before.

PROACTIVE REPLENISHMENT MONITOR

The Proactive Replenishment Monitor (PRM) software will guide the operator to prepare material in advance and place it nearby the machine, in order to reduce stoppages to a minimum. A web viewer shows a list of feeders in next-to-run-out order. The information displayed includes component name, location and remaining time until empty. The view can be configured to fit the working process, for example which machines should be monitored, and what time limits should activate the notification and warning color codes. The PRM SW can also be configured to automatically provide the new reel from the MYTower.



Technical requirements

- TPSys 3.3 or later.

| PART NUMBER | DESCRIPTION |
|------------------|---|
| 4007590/05130 | TPSys SW options upgrade MY300/PRM SW |
| L-050-0177/05130 | TPSys SW options upgrade MY100/200/PRM SW |



MYCENTER ANALYSIS — DASHBOARD SW

The dashboard and statistics software MYCenter Analysis gives Mycronic pick-and-place and jet printing users a great tool for improving utilization and reducing operator intervention.

The dashboard software includes the following main views:

- Live view — showing the current state of the line, number of boards produced, cycle time, efficiency, and workload balance.
- Component mispick and reject analysis — helping process engineers to fine-tune component handling parameters and finding the root cause for mispicks and vision rejects.
- Utilization analysis — showing the historical usage of the machines aggregated by day, week, month or year.
- Component placement analysis — showing the historical placement performance aggregated by day, week, month or year.

The historical data can be exported to a spreadsheet for further analysis and incorporation in for example a factory-wide performance report.

Technical requirements

- MY100/200/300.
- MY700 (optional).
- TPSys 4.2 or later.
- JPSys 3.19 or later.

| PART NUMBER | DESCRIPTION |
|-------------|----------------------------------|
| 4047484 | MYCenter Analysis for 1 machine |
| 4047485 | MYCenter Analysis for 2 machines |
| 4047486 | MYCenter Analysis for 3 machines |
| 4047487 | MYCenter Analysis for 4 machines |



BARCODE SCANNER WITH DISPLAY

The scanner's on-board touchscreen shows the same loading guidance as MYCenter's main screen, but in a more compact format. It helps the user to prepare, collect and load material without the necessity to remain physically at the MYCenter station. The scanner comes with a removable pistol grip, power supply and a charging cradle.

Technical requirements

- MYCenter 5.0 or later.

| PART NUMBER | DESCRIPTION |
|-------------|--|
| 4023390 | Barcode scanner with display EU |
| 4027283 | Barcode scanner with display US |
| 4041173 | Barcode scanner with display China |
| 4041172 | Barcode scanner with display Asia (excl China) |

History Pick-and-place software

TPSYS/MYCENTER VERSION 3.0

New functionality

- Support for Linescan Vision System 3 with front light and dark field illumination — easier vision programming and lower reject rate

TPSYS/MYCENTER VERSION 3.1

New functionality

- Easy programming of odd-shape packages and leadless packages using edge detection
- Handling of alternative components — possible to specify several valid components for each mount position

TPSYS/MYCENTER VERSION 3.2

New functionality

- Support for Agilis Smart Bins with e-labels
- Faster kitting with new Dynamic Pick List
- Improved support for mounting very large components
- More robust reading of laser-marked 2D barcodes with PVC5
- Calibration of PVC5 light intensity, for better repeatability between machine individuals

TPSYS/MYCENTER VERSION 3.3

New functionality

- Place-and-read PCB barcode label
- Integrated PRM software
- Support for Agilis Tray Magazine

TPSYS/MYCENTER VERSION 4.1

New functionality

- ODB++ import wizard
- New component wizard with gerber-to-footprint matching
- Component approved for production
- Reference image AutoTeach
- Destination displayed on Tower monitor
- Strict FIFO now possible
- User access handling
- Support for new high resolution label printer
- Improved feeder graphics

TPSYS/MYCENTER VERSION 4.2

New functionality

- Possible to hide obsolete and non-approved layouts
- PCB ID settings on layout level — no need to change switch between batches
- TPSys quiet mode — less warning messages when no operator action is required
- Automatic board positioning on MY300

TPSYS/MYCENTER VERSION 5.0

New functionality

- Support for barcode scanner with display
- Assisted mount function for zero reject assembly of small batches
- Separation of material belonging to different owners or projects
- Support for more than one multi-field barcode on carriers
- Support for ODB++ data in uncompressed folders
- Fields in carrier editor can be defined as Required or Protected

TPSYS/MYCENTER VERSION 5.1

New functionality

- Support for board transport using the new Hermes industry standard
- MYCenter loading tab has improved support for selecting the correct Agilis feeder type
- Improved performance by automatic archiving of discarded carriers
- Improved performance when creating a large number of containers in MYCenter
- Lock/unlock function on PCB item to avoid change of component name by mistake

TPSYS/MYCENTER VERSION 5.2/5.3

New functionality

- Improved MYPlan accuracy and balancing for MY300 machines
- Improved feeder and magazine placement guidance for MY300 machines
- Individual illumination when picking multiple components with Hydra
- Secondary feeder type support
- Support for flex-only tapes

Jet printing

Ejectors and accessories

The Jet Printer is completely software driven, applying solder paste or any other assembly fluid onto any type of board with high speed and precision. QFNs, pin-in-paste, package-on-package, encapsulation or other applications that have yet to be invented – all of these techniques can be carried out with unmatched precision and flexibility.

EJECTORS

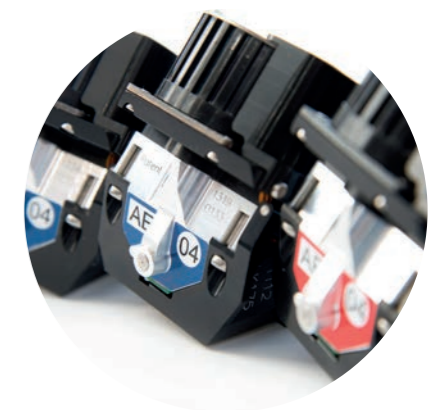
The ejector is the heart of the jet printing technology. Consult Mycronic support for selecting the correct ejector type for your application.

| PART NUMBER | DESCRIPTION |
|-------------|---|
| L-038-0228 | Ejector AE 01 for solder paste |
| L-038-0310 | Ejector AE 04 for solder paste |
| L-038-0231 | Ejector AF 02 for SMT adhesive |
| L-038-0313 | Ejector AF 04 for SMT adhesive |
| L-038-0240 | Ejector AG 01 for solder paste |
| L-038-0311 | Ejector AG 04 for solder paste |
| L-038-0330 | Ejector AM 01 for SMT adhesive |
| L-038-0331 | Ejector AM 02 for SMT adhesive |
| L-038-0367 | Ejector AQ 01 for solder paste |
| L-038-0368 | Ejector AR 01 for solder paste fine pitch |
| L-038-0371 | Ejector AR 02 for solder paste fine pitch |
| L-038-0374 | Ejector AS 01 for solder paste |

FILTER BOXES

The filter box is used to collect excess solder paste or adhesive during the jetting process. Consult Mycronic support for selecting the correct filter box type for your application.

| PART NUMBER | DESCRIPTION |
|-------------|--------------------------|
| L-038-0343 | Filter box black 10-pack |
| L-038-0344 | Filter box red 10-pack |





LEVEL SENSOR

The solder paste holder unit can be equipped with an optional level sensor for the solder paste cartridge/syringe (which also requires a special magnet to be placed on the paste cartridge plunger). The sensor is a "low level sensor", that is, it will not indicate the amount of media in the syringe, but warn only when the amount has reached a level when the syringe should be exchanged.

Technical requirements

- MY700 with SW JET2.3 or later.
- Holder unit prepared for sensor.

| PART NUMBER | DESCRIPTION |
|-------------|--|
| 4016270 | Holder unit with raised motor and level sensor |
| 4031524 | Sensor kit for Holder unit |



CASSETTE STAND

The cassette stand offers a convenient way to store cassettes when they are not inserted in the jet printer. It has room for three cassettes (holder units), and can be used both on the factory floor, and inside a cold storage.

| PART NUMBER | DESCRIPTION |
|-------------|----------------|
| L-030-0212 | Cassette stand |



PURGEL AND OTHER CONSUMABLES

Purgel should be used regularly to clean the ejector. Waste tubes and paper rolls are consumables needed for calibrating the ejector.



| PART NUMBER | DESCRIPTION |
|-------------|-------------------------------|
| L-038-0235 | Interflux purgel |
| K-033-0051 | Paper roll for cassette calib |
| K-033-0050 | Waste tube for cassette calib |



Material handling Accessories

Offering the correct component in the right place and in a controlled atmosphere, ready for a quick and simple set-up in your SMT line, the Mycronic MYTower greatly enhances production efficiencies. This highly flexible and expandable buffer storage unit holds thousands of SMD reels, and can dispense any one you request in just a few seconds.

AGILIS SMARTBOXES

The Agilis Smartbox is designed for storage of multiple reels and reels on feeders, miscellaneous material such as loose bags of components, Jedec trays etc. Customers are capable of storing any type of material as long as it is defined with a unique ID. Store multiple unique IDs within the same Agilis Smartbox and enable full traceability of all material within Mycronic's Material Handling SW. Any material's unique ID is connected to the smartbox so that operators know which specific material is inside an Agilis Smartbox at any given time.

Technical requirements

- TPSys 4.1 or later.

| PART NUMBER | DESCRIPTION |
|-------------|-----------------------|
| 4007366 | Agilis Smartbox 24 mm |
| 4007367 | Agilis Smartbox 32mm |
| 4007368 | Agilis Smartbox 44mm |
| 4049186 | Agilis Smartbox 56mm |





CARRIER PALLETS

Speed up your changeovers with carrier pallets! Carrier pallets can be used to store reels together with their Agilis feeder inside the MYTower. Pallets can also be used for heavy or sagging carriers that need support to be stored reliably. Empty carrier pallets can be stored inside the tower.

Technical requirements

- Agilis Pallet SW option.

| PART NUMBER | DESCRIPTION |
|-------------|--|
| K-060-0198 | Agilis Pallet 13" 5-pack |
| 4000617 | Agilis Pallet 15" 5-pack |
| 4000618 | Carrier Pallet 15" 5-pack without rubber |
| K-060-0257 | Carrier Pallet 13" 5-pack without rubber |
| K-060-0199 | Carrier Pallet 7" 5-pack without rubber |
| L-060-0052 | Upgrade kit Agilis Pallet SW |



TRAY BOXES

Tray boxes can be used to store Jedec-sized trays inside the Tower.

| PART NUMBER | DESCRIPTION |
|-------------|--------------------------|
| L-060-0034 | Tray box 16 mm (1 tray) |
| L-060-0016 | Tray box 32 mm (3 trays) |
| L-060-0021 | Tray box 44 mm (5 trays) |



Bringing tomorrow's electronics to life

MYCRONIC

MYCRONIC.COM

SWEDEN

Mycronic AB
PO Box 3141
Nytorpsvägen 9
SE-183 03 Täby
Sweden

Tel: +46 8 638 52 00

NETHERLANDS

Mycronic B.V.
High Tech Campus 10
5656 AE
Eindhoven
Netherlands

Tel: +31 402 62 06 67

FRANCE

Mycronic S.A.S.
1 rue de Traversière
CS 80045
94513 Rungis Cedex 1
France

Tel: +33 1 41 80 15 80

SOUTH KOREA

Mycronic Co. Ltd.
3rd Floor, Jung-San Bldg.
163 LS-ro Gunpo-Si
Gyeonggi-Do, 15808
South Korea

Tel: +82 31 387 5111

SINGAPORE

Mycronic Pte., Ltd.
9 Tagore Lane,
#02-08/09
9@Tagore
Singapore 787472

Tel: +65 6281 7997

GERMANY

Mycronic GmbH
Biberger Straße 93
D-82008 Unterhaching
bei München
Germany

Tel: +49 89 4524248-0

UK

Mycronic Ltd.
Unit 2, Concept Park
Innovation Close
Poole, Dorset, BH12 4QT
UK

Tel: +44 1202 723 585

CHINA

Mycronic Co., Ltd.
Unit 106, E Block
Lane 168, Da Duhe Road.
Putuo District, 200062
Shanghai P.R. China

Tel: +86 21 3252 3785/86

JAPAN

Mycronic Technologies KK
KDX Chofu Bldg. 7th floor
1-18-1 Chofugaoka,
Chofu-shi
Tokyo 182-0021
Japan

Tel: +81 42 433 9400

USA

Mycronic Inc.
554 Clark Road
Tewksbury
MA 01876
USA

Tel: +1 978 948 6919